

# VILLAGE PROPERTY



**3105/6 Grove Street Dulwich Hill NSW**

2 2 1

Available 4th October -

Stunning two bedroom + study apartment in the modern complex 'Arlington Grove'. One minute walk to Arlington Light Rail stop - be in Sydney's CBD in 30 minutes, moments to Johnson Park and Arlington Recreation Reserve and close to vibrant village hubs of Dulwich Hill and Marrickville.

You are just a Moments stroll to Johnson Park and Arlington Recreation Reserve and the iconic Sideways Deli Cafe. Located in the inner city hubs of Dulwich Hill and Marrickville, Arlington Grove is at the heart of a new approach to urban style.

**Type** : Apartment

**Price** : \$850 Per Week

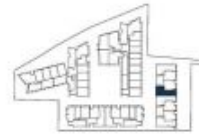
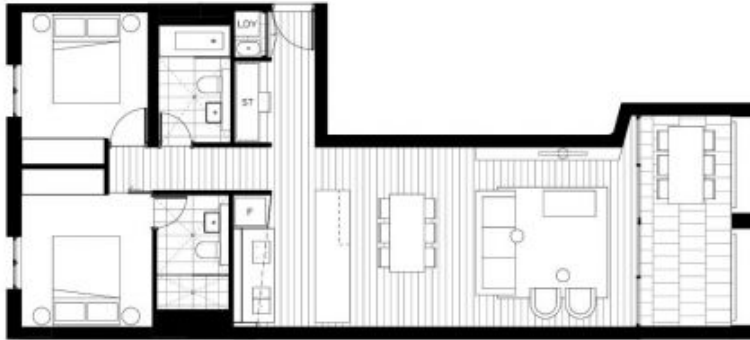
**View** : <https://www.villageproperty.com.au/lease/nsw/inner-west/dulwich-hill/residential/apartment/8123655>



**Alan Wang**  
1300 62 44 00

[For full version visit the website](https://www.villageproperty.com.au)

<https://www.villageproperty.com.au>



All areas shown are draft and subject to survey. All apartments subject to contract and availability. Images showing the building, interior and views are computer generated prior to construction and indicative only. Dimensions, layouts, finishes and specifications are subject to change and may differ from those shown. Views differ between apartments. Ground floor retail not yet confirmed. Furniture and fittings are for descriptive purposes and are not included.  
01/05/2015



**Arlington**  
Grove Dulwich Hill

## HAMLIN apartments

### TWO BEDROOM + STUDY APARTMENT

3105

INTERNAL AREA:	79m <sup>2</sup>
EXTERNAL AREA:	10m <sup>2</sup>
TOTAL:	89m <sup>2</sup>

ARLINGTONGROVE.COM.AU  
**1800 881 221**

**galileo CBRE**