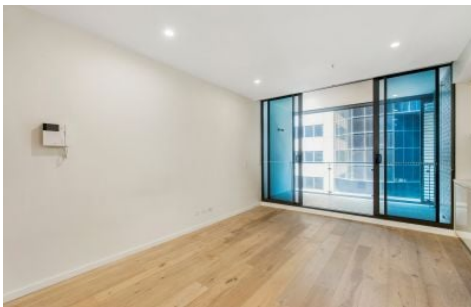


VILLAGEPROPERTY



1105/209 Castlereagh Street Sydney NSW

1 1

Designed by internationally renowned architects Tony Owen Partners, The Castlereagh Apartments represent the perfect balance of comfort, style, and urban convenience.

This exquisite apartment boasts a spacious, well-designed floorplan, offering effortless contemporary city living at its finest. Immaculately maintained and located in a highly sought-after community, this property is sure to impress.

With Hyde Park a block away and only a short walk to Westfield shopping precinct, QVB, Pitt Street Mall, Chinatown and Darling Harbour, this home provides a perfect city living lifestyle.

- Sizable light filled studio residence

Type : Apartment

Price : For Sale: \$620,000

View : <https://www.villageproperty.com.au/sale/nsw/sydney-city/sydney/residential/apartment/8125839>



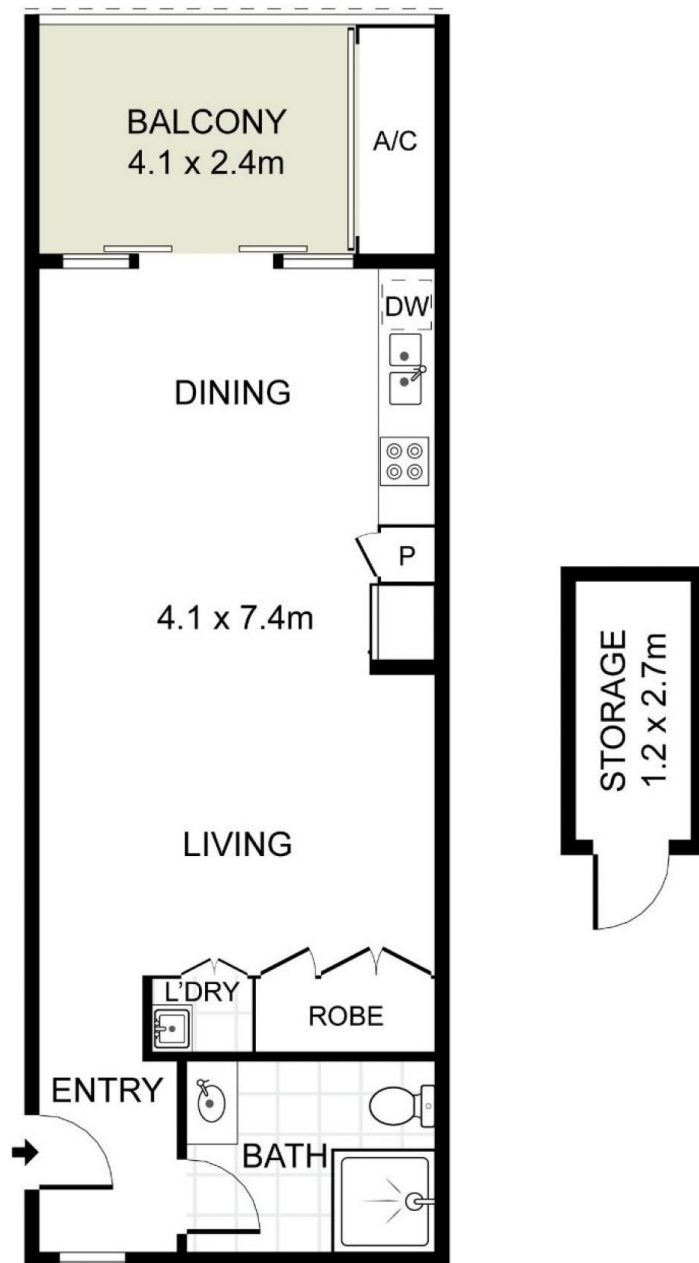
Gene Kingston
1300 62 44 00



Jack Williams
1300 62 44 00

[For full version visit the website](https://www.villageproperty.com.au)

<https://www.villageproperty.com.au>



1105/209 Castlereagh Street, Sydney

DISCLAIMER: PLANS SHOWN ARE FOR PRESENTATION PURPOSES AND ARE NOT PART OF ANY LEGAL DOCUMENT. ALL MEASUREMENTS AND FIGURES ARE APPROXIMATE.