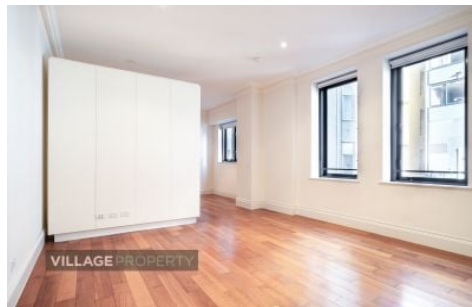


VILLAGE PROPERTY



209/9-15 Bayswater Road Potts Point NSW

1 1

Available 7th October

This property is an immaculately restored and beautifully detailed Art Deco trophy apartment, situated in the heart of Potts Point. This Studio apartment presents a unique opportunity to live a glamorous lifestyle that fuses the golden age of Art Deco with cutting-edge contemporary design. Foosteps away to Kings Cross Station and Woolworths Metro. Popular cafes and restaurants are all within walking distance for your convenience.

Take advantage of this limited opportunity to live in a highly desirable location.

Lease periods are 12 months. Pets at landlord's discretion.

[For full version visit the website](https://www.villageproperty.com.au/lease/nsw/ea-stern-suburbs/potts-point/residential/apartment/8128088)

Type : Apartment
Price : \$650 Per Week
View : <https://www.villageproperty.com.au/lease/nsw/ea-stern-suburbs/potts-point/residential/apartment/8128088>



Alan Wang
1300 62 44 00

<https://www.villageproperty.com.au>



APT
209 / 309 / 409 / 509
607 / 707 / 807

Studio Apartment

Internal area 39m²
Total area 39m²

Note: all areas indicated above are approximate only and are subject to final survey



DEVELOPED BY



DISCLAIMER: 1. Please note that this brochure was prepared prior to completion of construction. 2. The photographs and images of the landscape and landscape elements, buildings and home interiors are indicative only. 3. The final installed materials and finishes may vary from photography and images contained herein. 4. Changes may be made during the development and construction. 5. The information contained herein is believed to be correct but is not guaranteed. 6. Prospective purchasers must rely on their own inspection. 7. This brochure is a guide only and does not constitute an offer or contract. 8. Whilst all reasonable care has been taken by the Tooga Group and their related companies, representatives and agents, they accept no responsibility for any loss, damage or claim of whatsoever nature suffered by any person seeking to rely on any information, representation, projection, advice, opinion or other statement provided herein.



02 8969 8500