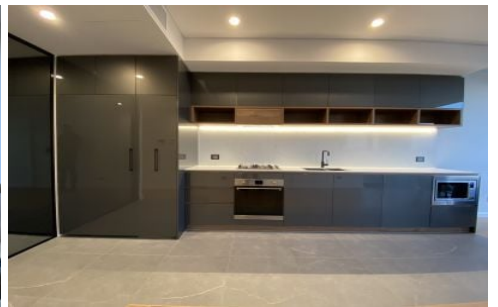
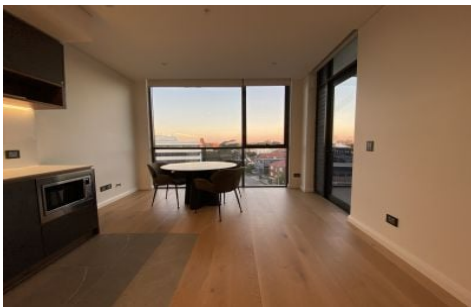


VILLAGE PROPERTY



805/16 Fisher Street Petersham NSW

1 1 1

Available NOW -

Situated on the top floor overlooking area views and bathed in natural sunlight. Revel in the charm of village life while enjoying all the benefits of inner-city living just a short commute to the Sydney CBD. Petersham train station just footsteps away and only a few stops the CBD. Long considered one of Sydney's hidden gems, Petersham's exceptional food and dining scene, combined with convenient shopping, effortless transport and top local schools, make it a true local treasure.

Lease period 6-12 months. Pets at landlord's discretion.

Features:

[For full version visit the website](https://www.villageproperty.com.au)

Type : Apartment

Price : \$775 Per Week Penthouse

View : <https://www.villageproperty.com.au/lease/nsw/inner-west/petersham/residential/apartment/8149238>



Alan Wang
1300 62 44 00

<https://www.villageproperty.com.au>