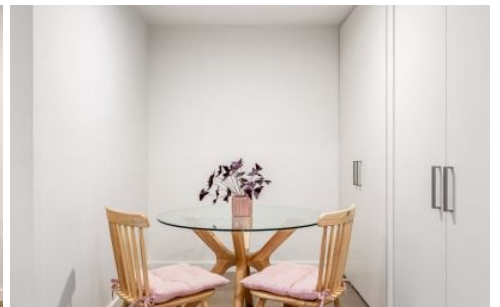


# VILLAGE PROPERTY



604/36 Oxford Street Epping NSW

1 1 1

Embrace a low-maintenance, ultra-modern lifestyle in this light-filled, North-facing apartment, perfectly situated in the prestigious Oxford Central development's architectural Vista Tower. Designed for comfort and style, this residence offers sleek interiors and an unbeatable location in the vibrant heart of Epping.

**Type** : Apartment

**Price** : \$675,000 - \$725,000

**View** : <https://www.villageproperty.com.au/sale/nsw/northern-suburbs/epping/residential/apartment/8152197>

#### Key Features:

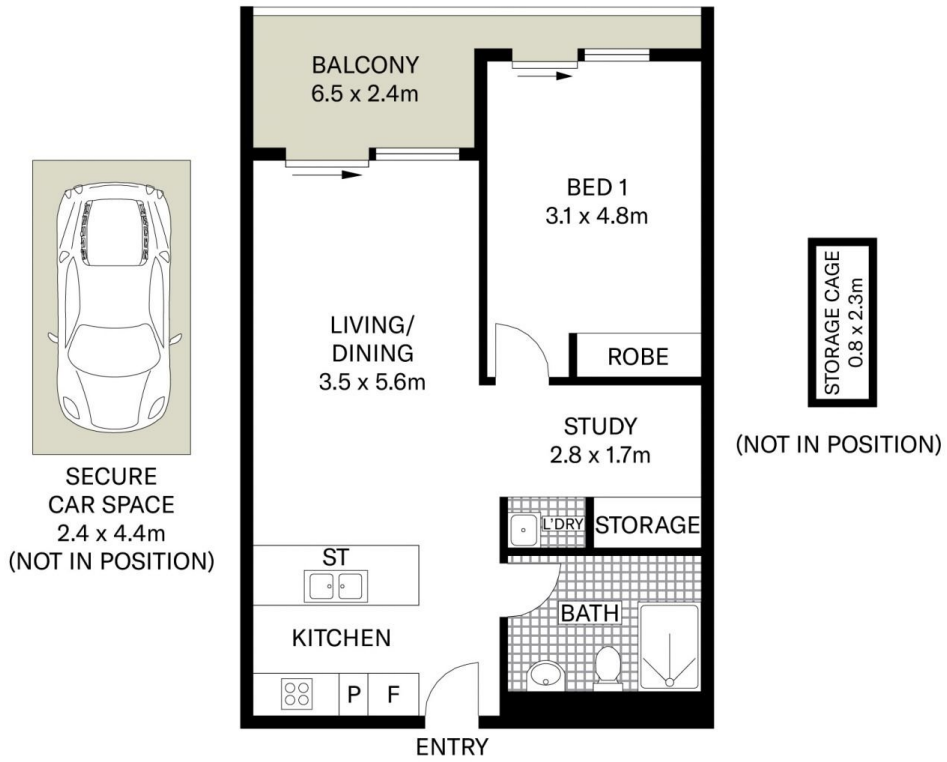
- Expansive floor-to-ceiling windows flood the space with natural light, while the open-plan layout maximises flow and functionality.
- Positioned high with a prized North-facing aspect, enjoy sweeping, uninterrupted area views.
- The designer kitchen features stone benchtops, a



**Thomas (tom) Jones**  
1300 62 44 00

[For full version visit the website](https://www.villageproperty.com.au)

<https://www.villageproperty.com.au>



All information contained herein is gathered from sources we believe to be reliable. We cannot however guarantee its accuracy and parties should and rely on their own requirements.



604/36 Oxford Street, Epping

**VILLAGE**  
PROPERTY