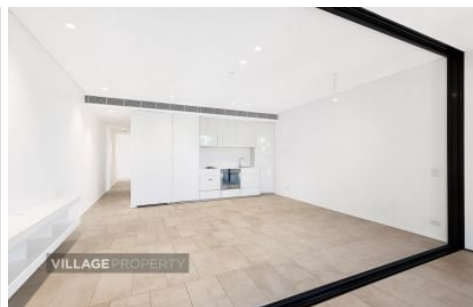


VILLAGE PROPERTY



311/8 Central Park Avenue Chippendale NSW

1  1  1 

Available from 25th October -

Designed by world-class architects, Central Park is located just a step away from Central station and Sydney's Creative and education precincts. Highly convenient with shopping, dining and entertainment right within Central Park.

- Two bedroom size
- Decent size student room (second room) with windows
- Combined lounge and dining area with tiled floors
- Modern kitchen with stainless steel appliances including dishwasher
- Modern bathroom with shower
- Internal laundry with wash-dryer

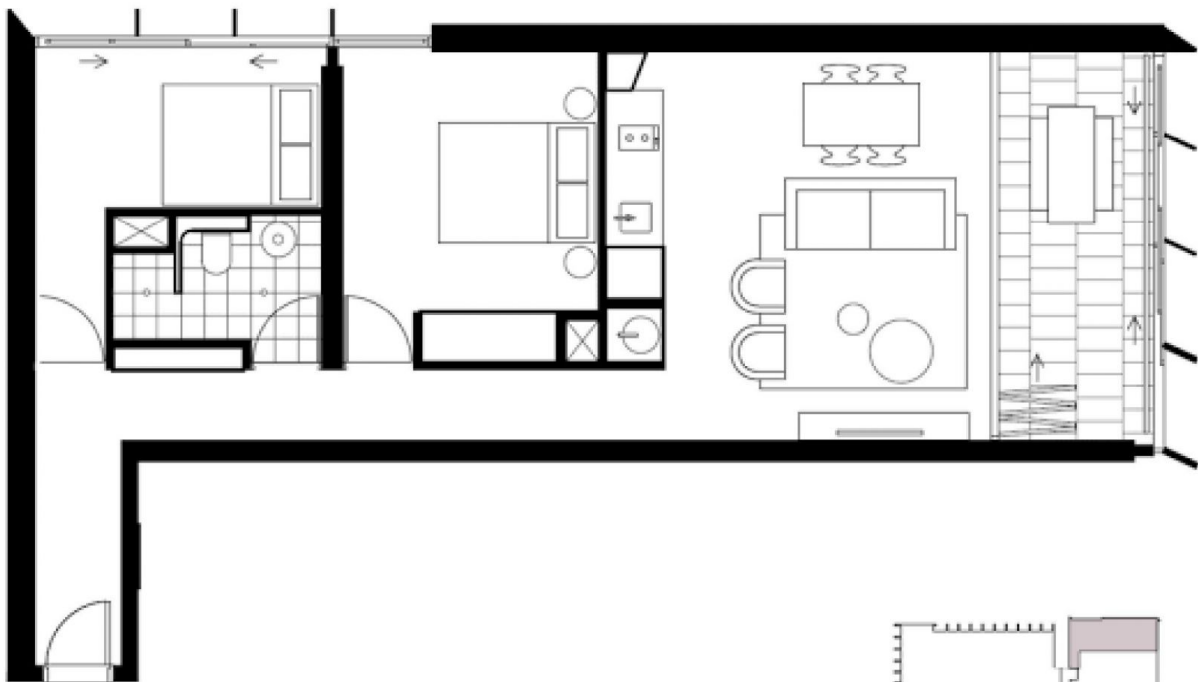
[For full version visit the website](https://www.villageproperty.com.au)

Type : Apartment
Price : \$1,100 Per Week
View : <https://www.villageproperty.com.au/lease/nsw/sydney-city/chippendale/residential/apartment/8154642>



Zhuoqun (kate) Zhang
1300 62 44 00

<https://www.villageproperty.com.au>



One Bed | One Bath | One Study
Internal 63 sqm
Loggia 9 sqm
Total 72 sqm

