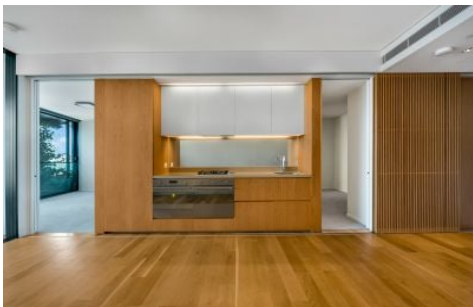


# VILLAGE PROPERTY



**E1106/3 Carlton Street Chippendale NSW**

2  1  1 

Available from 19th November -

Designed by world-class architects, Central Park is located just a step away from Central station and Sydney's Creative and education precincts. Highly convenient with shopping, dining and entertainment right within Central Park.

- Combined lounge and dining area with timber floors
- Enclosed balcony/sunroom with breathtaking views
- Modern kitchen with stainless steel appliances
- Modern bathroom
- Built-in wardrobes
- Ducted air conditioning
- Security intercom system

[For full version visit the website](https://www.villageproperty.com.au)

**Type** : Apartment

**Price** : \$1,200 Per Week

**View** : <https://www.villageproperty.com.au/lease/nsw/sydney-city/chippendale/residential/apartment/8164357>



**Zhuoqun (Kate) Zhang**  
1300 62 44 00

<https://www.villageproperty.com.au>