




VILLAGE PROPERTY



322/32 Civic Way Rouse Hill NSW

2  2  1 

Available from the 14/11/2024

Entrance to building in Tower 4.

Village Property is pleased to offer for lease this 2 bedroom apartment that is sure to exceed your expectations.

Positioned just moments from the Rouse Hill Town Centre precinct, Proximity provides you with the perfect location for the ultimate combination of accessibility and lifestyle..

To keep your new home tidy, built-in storage is a major feature of this apartment, providing ample room in the kitchen, bathroom and bedroom.

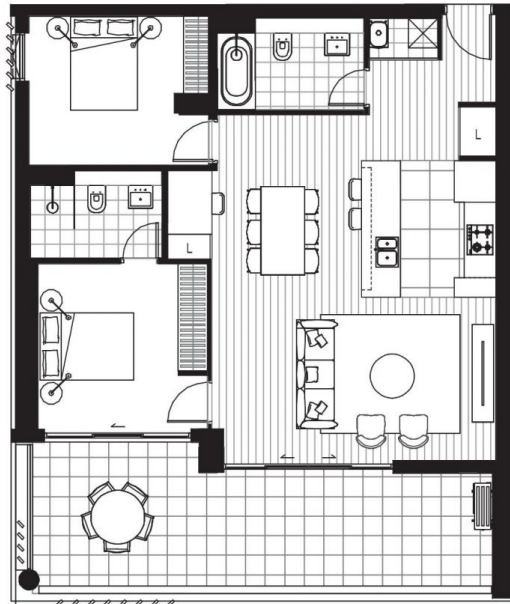
Type : Apartment

Price : \$720 Per Week

View : <https://www.villageproperty.com.au/lease/nsw/hills/rouse-hill/residential/apartment/8165738>

[For full version visit the website](https://www.villageproperty.com.au)

<https://www.villageproperty.com.au>



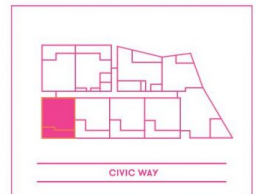
PROXIMITY

VIEWPOINT
BUILDING 4
**APT 322,
521**

 
2 2

TOTAL: 108 sqm

INTERNAL	84 sqm
EXTERNAL	24 sqm



PROXIMITYHOUSEHILL.COM.AU
1300 031 262



Updated 24 November 2021 - Note: this plan is a guide only and does not constitute an offer or contract. Please note that changes may be made to the development during construction and elements such as areas, fittings, fixtures etc may change without notice. All parties should rely on their own investigation to validate this information as it is not guaranteed. No liability will be accepted for any inaccuracy or misstatement.