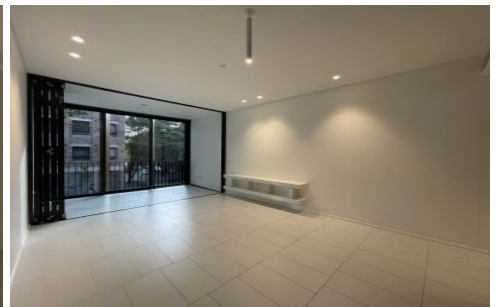


VILLAGE PROPERTY



111/8 Central Park Avenue Chippendale NSW

2  **2** 

Available 9th December -

Designed by world-class architects, Central Park is located just a step away from Central station and Sydney's Creative and education precincts. Highly convenient with shopping, dining and entertainment right within Central Park. Conveniently positioned only minutes to Chinatown, Sydney CBD, Central Station, cafes, restaurants and much more.

Lease term 6-14 months.

Features:

- One bedroom and a studio with individual kitchen and bathroom

Type : Apartment

Price : \$1300 Per Week

View : <https://www.villageproperty.com.au/lease/nsw/sydney-city/chippendale/residential/apartment/8181049>



Alan Wang
1300 62 44 00

[For full version visit the website](https://www.villageproperty.com.au)

<https://www.villageproperty.com.au>